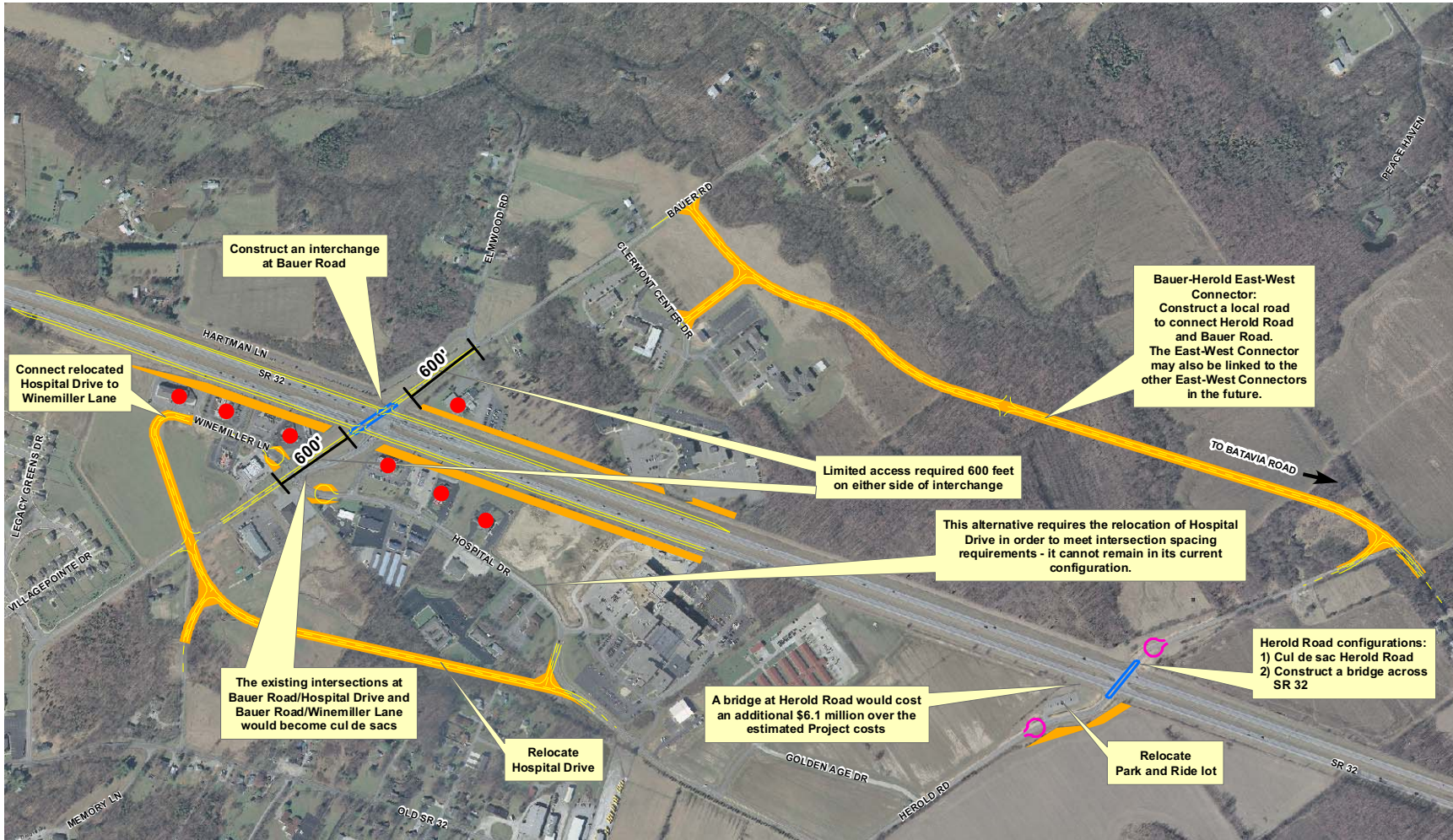


SR 32 East Corridor Study

Bauer-Herold A1 Alternative



Bauer-Herold East-West Connector:
Construct a local road to connect Herold Road and Bauer Road. The East-West Connector may also be linked to the other East-West Connectors in the future.

Limited access required 600 feet on either side of interchange

This alternative requires the relocation of Hospital Drive in order to meet intersection spacing requirements - it cannot remain in its current configuration.

Herold Road configurations:
1) Cul de sac Herold Road
2) Construct a bridge across SR 32

A bridge at Herold Road would cost an additional \$6.1 million over the estimated Project costs

The existing intersections at Bauer Road/Hospital Drive and Bauer Road/Winemiller Lane would become cul de sacs

Connect relocated Hospital Drive to Winemiller Lane

Construct an interchange at Bauer Road

LEGEND

- Proposed Improvements
- Right of Way Required
- Relocations required

Aerial: 2006

