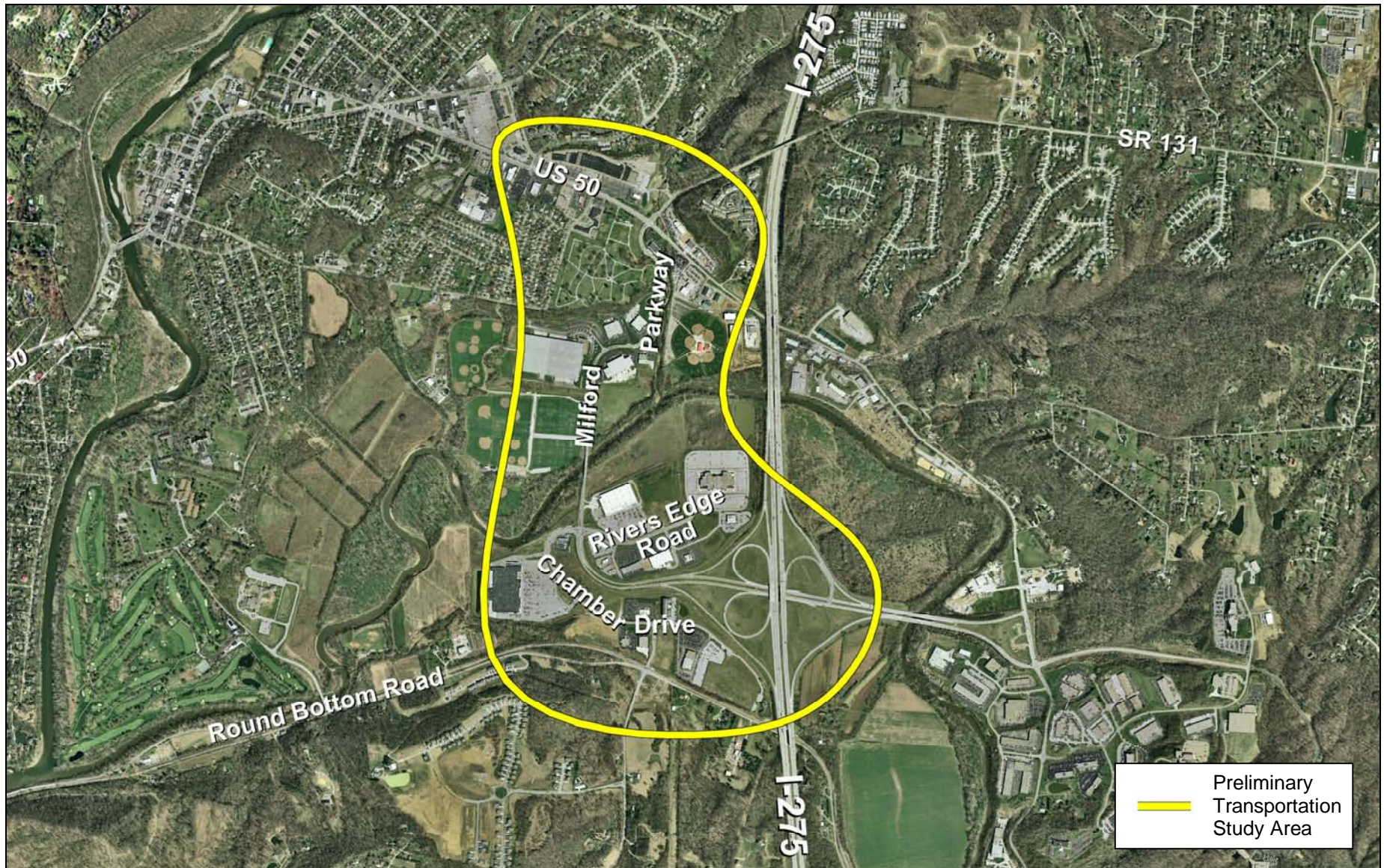


US 50/SR 131 & Milford Parkway/Chamber Drive Improvements Clermont County Transportation Improvement District

Public Open House Meeting – Wednesday, November 18, 2009 – 5:00 PM to 7:00 PM
Milford Community Fire Fighters Hall
1005 Lila Avenue, Milford, Ohio 45150 – East End of the Milford Shopping Center



US 50/SR 131 & Milford Parkway/Chamber Drive Improvements

Clermont County Transportation Improvement District

Project Description

The Clermont County Transportation Improvement District, in cooperation with the City of Milford, the Clermont County Engineer's Office, Miami Township, and Union Township, and the Ohio Department of Transportation, is beginning to study the US 50/SR 131 and Milford Parkway/Chamber Drive intersections and the surrounding areas for possible economic, environmental, and transportation improvements.

As part of this project, a market analysis study, environmental overview, and traffic analysis will be performed for the study area.

Project Goals

Initial goals developed by the team for the US 50/SR 131 and Milford Parkway/Chamber Drive Improvements project include the following:

- Evaluate the economic conditions of the area, identify areas of potential growth, and assist in the determination of anticipated traffic volumes in the area.
- Identify environmental features and potential mitigation/green infrastructure opportunities.
- Improve the study area access, safety, and travel efficiency for both current traffic volumes and potential growth in the study area.
- Develop a transportation plan for future community, economic, and redevelopment opportunities.

Project Input

We are gathering data on the existing issues, resources, and features relative to the project study area and are presenting some of that information at the public open house meeting to be held on Wednesday, November 18, 2009, from 5:00 PM to 7:00 PM, at the Milford Community Fire Fighters Hall.

Please plan on attending the meeting to provide your input. If you have any questions or concerns, feel free to contact any of the project team members listed to the right.

Contacts

Steve Wharton
Clermont County Transportation Improvement District
175 East Main Street, Suite 150
Batavia, Ohio 45103
ed3c@fuse.net
513.289.9051
www.tid.clermontcountyohio.gov

Loretta Rokey
City of Milford
745 Center Street, Suite 200
Milford, Ohio 45150
lrokey@milfordohio.org
513.576.5460
www.milfordohio.org

Craig Stephenson, P.E.
Clermont County Engineer's Office
2381 Clermont Center Drive
Batavia, Ohio 45103
cstephenson@co.clermont.oh.us
513.732.8883
www.clermontengineer.org

Robert W. Bailey, P.E.
Bayer Becker
6900 Tylersville Road, Suite A
Mason, Ohio 45040
bobbailey@bayerbecker.com
513.336.6600
www.bayerbecker.com